

Duke University

Welcome

One wonderful element of a new program like the Baldwin Scholars is that there's always progress to report; every milestone we reach is a "first," and we have reached many such milestones in the past six months. Since you last heard from us, here's what we've accomplished:

- We selected 18 upperclass women (out of a pool of 36) to serve as Giles Mentors for our Baldwin Scholars.
- We furnished our fabulous space in the East Duke Building (a hard job, but someone has to do it!)
- With the help of our Curriculum Committee, we planned and listed our spring 2005 seminar: *Perceptions of the Self, Society, and the Natural World*.
- After a strong marketing effort in September and October, we received and sifted through 78 applications from first-year women who wanted to be admitted to the program – a full 10% of the women in the class of 2008. We interviewed all of them once and half of them a second time before choosing the 18 women who are profiled in this newsletter.

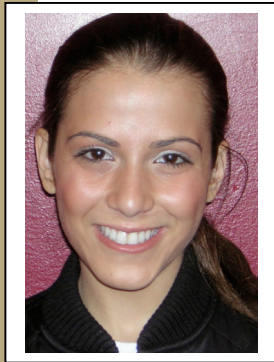
As you will see from the profiles, our inaugural Baldwin Scholars possess an impressive range of talents and skills. We have artists, scientists, athletes and aspiring politicians. Several of the women were born outside the United States, or have lived in

other countries for significant portions of their young lives. We have three women from Tennessee, two proud Midwesterners, and two who call the West Coast home. Nine of the 18 identify as women of color, and 7 participated in a FOCUS program in their first semester at Duke. At the first meeting of our seminar on January 12, they introduced themselves to one another and to the faculty; we look forward to the bonds of friendship deepening at our retreat January 21-22, and throughout the semester.

The Baldwin Scholars has been many years in the making; my involvement with the creation of a women's leadership program at Duke dates back to 1999. How gratifying it was on January 12 to see that dream realized as our first class filed into the seminar room. Many people in the Duke community – students, faculty, staff, alumnae – worked hard to make this happen, and we appreciate everyone's ongoing support and contributions. We hope you will come visit us at 204 East Duke when you are in the area; we also hope to have some regional events elsewhere in the United States. Until then, keep current with the program by checking the website:
<http://baldwinscholars.duke.edu>.

Donna Lisker
Co-Director, Baldwin Scholars

Meet Carolyn Rubenstein, a Giles Mentor...



Carolyn Rubenstein
Class of 2007

I have had a passion for helping critically ill children since a visit to Camp Sunshine in Casco, Maine when I was just six years old. Camp Sunshine is a retreat for children with life-threatening illnesses and their families. I volunteered at the camp in middle school. Because of these experiences, I founded a program for critically ill children, Carolyn's Compassionate Children, when I was 13 years old. Carolyn's Compassionate Children, a 501(c)3 non-profit organization, links home bound or hospitalized children with their "healthy" peers through pen pal relationships. In addition to being a pen pal network, Carolyn's Compassionate Children awards ten college scholarships annually to childhood cancer survivors. In 2005, Carolyn's Compassionate Children will award an additional

scholarship in memory of Kadeejah Moore who passed away in Spring 2004 at Duke Hospital after a long battle with cancer.

I wanted to become a Giles Mentor because of the gap I saw between confidence levels of men and women. I noticed that women are just as smart as the men in their classes but that an enormous amount of females don't show the level of confidence that the men are showing. I hope that through my position as a Giles Mentor I will be able to help close this gap.

I am from Boca Raton, Florida and graduated cum laude from Pine Crest School in 2003. I am a Psychology major and a candidate for the Human Development Certificate. I will graduate in 2007 from Duke and hope to obtain my Ph.D. in Clinical Psychology.

Baldwin Scholars recruitment

This past summer, we mailed a booklet to all incoming first-year women in the Class of 2008 featuring "first" women at Duke including Rose Davis, the first woman to earn a Ph.D. at Duke, and Alana Beard, the first Duke female student-athlete to have her jersey retired. The booklet marketed the Baldwin Scholars program as an opportunity to connect with mentors, sharpen critical thinking and problem-solving skills, and be empowered to create change. We received a phenomenal response from first-year women, with over 250 of the 790 requesting more information.

We also created a poster campaign, highlighting three successful Duke alumnae: Pooja Kumar, Annabeth Gish, and Elizabeth Dole. Pooja Kumar, Class of 2001, was attending medical school at Harvard and was recently awarded a 2004 Rhodes

Scholarship to study international relations at Oxford. Annabeth Gish, Class of 1993, is a well-known actress who starred opposite Julia Roberts in *Mystic Pizza* before she arrived at Duke. Elizabeth Dole, Class of 1958, has served the public in many roles including US Secretary of Labor, US Secretary of Transportation, and US Senator from North Carolina. Their profiles can be found on the Baldwin Scholars website (http://baldwinscholars.duke.edu/featured_women/).

We also held 10 information sessions on East Campus outlining the Women's Initiative research findings and describing the components of the Baldwin Scholars program. At these sessions, upperclass women were also invited to talk about why they think this program is important for women at Duke and what benefits they perceive to be associated with the experience.

Finally, we asked faculty, staff and students who work directly with first-year students to recommend outstanding first-year women.

Our efforts paid off as we received 78 applications for the 18 spaces in the Baldwin Scholars program!

Baldwin Scholar posters

Pooja Kumar:

Find your passion

Annabeth Gish:

Imagine the impossible

Elizabeth Dole:

Leave a legacy

Baldwin Scholars selection

All of the 78 applicants were invited to a first interview with Colleen Scott, Assistant Director of the Baldwin Scholars program, and one of the upperclass Giles Mentors. Recommendations were made after this first phase to forward 37 of the original pool to a second interview.

Second interviews were conducted primarily by co-Directors Donna

Lisker and Emily Klein with assistance from Advisory Board members as needed.

Interviews were designed to assess candidates' self-awareness and leadership potential.

The selected Baldwin Scholars are an impressive group of interesting and motivated young women.



Baldwin Scholar Lisa Richards introducing herself to the class.

Baldwin Scholars profiles

Meet the inaugural class of Baldwin Scholars. Their interests include health policy, biomedical engineering, lacrosse, singing and volunteering.

Aislinn Affinito is from Tucson, Arizona. She participated in the Humanitarian Challenges FOCUS program and is involved with Duke Republicans; she is interested in film, environmental policy and politics and wants to be the President of the United States.

Kelley Akhiemokhali, from Houston, Texas, was also a participant in the Humanitarian Challenges FOCUS program; she wants to be an international human rights activist and is considering the Peace Corps.

Nathalie Basile is from Johnson City, Tennessee. Nathalie is pre-med and considering a French major/biology minor. Nathalie showed significant risk-taking in high school by trying out for senior speaker.

Regan Bosch, from Annapolis, Maryland, is a varsity lacrosse player. She started painting during her senior year of high school and found her passion. She is interested in being a science researcher or an artist.

Megan Braley, from Oakton, Virginia, was a member of the Girl Scout for twelve years. Megan is already involved in community service at a Durham elementary school.

Kamaria Campbell is from Tampa, Florida and attended an all-girls high school. She is considering a computer science major. Kamaria is involved in the Black Student Alliance and has a vision to make the organization more active and goal-oriented.

Andrea Dinamarco is from Pembroke Pines, Florida and was born in Brazil. She speaks French, English, Spanish, and Portuguese, is learning Italian and wants to learn Japanese. She has possible career interests in international business.

Sarah Gordon, from Iowa City, Iowa, is interested in health care activism. She participated in Project BUILD and is now active as a Durham Crisis Response Center volunteer. Academically, she is interested in Spanish, economics, languages, and law.

Pallavi Kansal, from Memphis, Tennessee, is a student in the Pratt School of Engineering, interested in biomedical engineering. She was born in India and came to the US when she was eight years old. Pallavi participated in the Changing Faces of Russia FOCUS program, plays the piano and rows with the novice crew team.

Claire Lauterbach is from Arlington, Virginia, and grew up in West Africa. Claire was also a participant in the Humanitarian Challenges FOCUS program and is interested in human rights activism and global development. She is involved in badminton, Model UN, and Tae Kwon Do.

Rachel McLaughlin, from Fenton, Missouri, was the Student Government Association president in high school and is the first person from her high school to attend Duke. She participated in the Changing Faces of Russia FOCUS program and sings with an a capella group at Duke.

Anita Pai was also born in India and grew up in Nashville, Tennessee. She is pre-med, potentially interested in geriatric medicine. She is a trained classical Indian dancer, musician, and tennis player.

Lisa Richards is from Los Gatos, California. She is a biomedical engineering student in the Pratt

School of Engineering. Lisa is an equestrian, a percussionist with the Duke Symphony Orchestra and was involved with a robotics club.

Rachel Shack, from Andover, Massachusetts, is also a varsity lacrosse player. Rachel is potentially interested in a sports management career. In high school, Rachel tutored ESL, coached adults applying for US citizenship, and sang a capella.

Vanja Vlahovic, from Chapel Hill, North Carolina, was born in the former Yugoslavia and is of Serbian/Croatian descent. Her academic interests are in art history and biology.

Laura Welch from Baltimore, Maryland, is an actor, performer, and singer. She is a first-year representative to the Black Student Alliance and is involved with the Center for Race Relations and the investment club. Laura is interested in finance and law.

Meng Zhou was born in China and grew up in Juneau, Alaska and Portland, Oregon. Meng participated in the Modern America FOCUS program and is interested in public policy and politics. In high school, she was active with a youth commission that served in an advisory function to the school board; Meng mobilized the group to discuss issues and influence policy.

Plans for Spring, 2005...

- The Baldwin Scholars began a seminar together in January, 2005. The course, entitled "Perceptions of Self, Society, and the Natural World," will be team-taught by Drs. Donna Lisker, Emily Klein, and Frances Graham. The syllabus can be reviewed at <http://baldwinscholars.duke.edu/program/>.
- A retreat for the Baldwin Scholars will be held in Chapel Hill in late January. The students will participate in activities including icebreakers and teambuilders, an assessment exercise, a workshop on power and influence, a lunch with their upperclass mentor, and a film/discussion about the civil rights movement.
- In February, the Baldwin Scholars will select their housing assignments for the 2005-06 academic year. The group will live together on West Campus during their sophomore year and may have the option to return to the living community in future years. We are very grateful to Residence Life and Housing Services for their generous allocation of space in Crowell Quad.

Contact us...

We'd love to hear from you!

phone: 919/684-6579

e-mail: baldwinscholars@duke.edu

Best wishes for a happy new year!

Donna, Emily, and Colleen

Photos from the Baldwin Scholars Welcome Reception – January 18, 2005



Baldwin Scholar Claire
Lauterbach with Dr. Robert
Thompson, Dean of Trinity
College

Baldwin Scholars (from left)
Rachel Shack, Regan
Bosch, and Megan Braley



Giles Mentors (from left)
Sarah Baker, Jessica
Palacios, and Lauren Hunt

Dr. Linda Franzoni, Pratt
School of Engineering (left)
with Baldwin Scholar Pallavi
Kansal

